



Celebrating  
*50 Years*  
of Service

2021-2022 Annual Report

# A GOLDEN MILESTONE







## INCLUSION

As an inclusive program, we work hard to ensure that all kids reach their full potential regardless of backgrounds or abilities within caring enriching classroom environments.

## VISION

We believe that all children reach their full potential when given a strong start.

## MISSION

CLC develops a foundation for future contributing members of society and strong communities by providing accessible and research-based programs for young children and families.





## Dear Parents & Friends,

This year marked a Golden Milestone for Children's Learning Center as we celebrated 50 years of early childhood services for the children and families of Teton and Sublette Counties!

Our story began in Jackson Hole in January of 1972 when a handful of local women gathered to address an issue that challenged each one of them: reliable, safe, and educational support and care for children with a wide range of abilities and needs. Until this point, few options existed for consistent childcare, and even fewer resources were available to children who had special needs.

These trailblazers, included Mary Kay Turner and friends who secured a \$10,000 grant to provide developmental screenings and early interventions to young children with special needs in Teton County.

Shortly thereafter, a group of local parents led by Sandy Shuptrine and Lynn Simpson, struggling to find reliable, affordable childcare, launched the Community Children's Project (CCP). Beginning as a parent co-op, CCP ultimately became the valley's first childcare program for working families in partnership with the county.

A few years later, the Learning Center grew to offer childcare and education services in Sublette County too. And, under the leadership of Anita Sullivan and Lety Liera, we expanded our services to include Head Start and Early Head Start for young children of "at risk" families.

In 2008, The Learning Center and CCP officially merged, becoming today's Children's Learning Center. CLC now operates two campuses in Teton County, two in Sublette County, and continues to offer excellent early childhood education, special education, and reliable, affordable childcare to nearly 1000 young kids a year.

These past couple of years have amplified what we've known for decades to be true: without safe, reliable, affordable childcare, the ripple effect on the entire community is significant. Parents can't work, employers can't find and retain excellent staff, and children miss the opportunity for critical early education and services to address developmental delays.

I am proud and deeply humbled by our incredible history and the staff, parents, community members and leaders who continue our legacy of service.

Warmly,

Executive Director

# In 50 Years CLC Has Touched the Lives of Thousands of Kids And Families

Excerpts from our anniversary interviews



“When we started the Learning Center, **I never imagined the immense good this program is doing.** It’s one of the star developmental programs in the state.”

— Mary Kay Turner | Founder



“Without the special ed services CLC provided for our son and our family, **I don’t know what we would’ve done...**we didn’t know where to turn...we might have been forced to leave the valley.”

— Eileen and Greg Prugh | Parents



“Quality early education should be the right for every family...**we need CLC!**”

— Lynn Friess | Grandparent

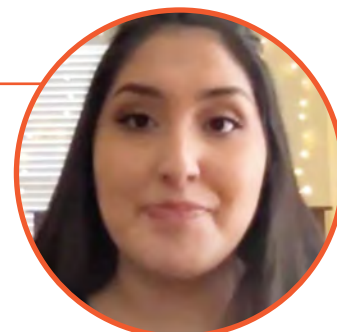


“Ultimately it comes down to the love of teachers. Thanks to the great CLC teachers, I know my kids are fed, they’re safe, they’re cared for...**it takes away any stress I have about them during the day.**”

— Lauren Roux | Parent

“If I hadn’t gone to Head Start, I would have fallen way behind. **Head Start gave me a love of learning and the early skills I needed to succeed in school.**”

— Laura Perez | Graduate Student | Head Start Alumna







“Without all the services and resources CLC provides to our low income families, **it would be very hard for our families and hard for their kids to get ready for kindergarten.**”

— Sonia Hernandez | Head Start Teacher and Coach

“**The learning center in Sublette County is a vital part of the kids services here** and for it to live for 50 years, how cool is that? It shows that its got longevity here; it's been supported.”

— Mary Lankford | Former CLC Board Member



“Since my kids have gone to CLC I notice that they are more social, more responsible, they have great friends and they are comfortable around adults....and **they are so incredibly safe.**”

— Alden Wood | Parent

“**Every teacher brought such passion and enthusiasm for our kids education and well-being every single day.**

As working parents, we knew our kids were in a great, safe place, which enabled us to focus on our own careers during the day.”

— Jessica Jaubert | Parent and CLC Board member



“Being parents of a special needs child, we wanted and expected the best life for our daughter and **CLC backed us up. It was a life-saver.**”

— Mycah and Mom | CLC Alumna



“**Quality early education program like CLC** that meets the needs of families, children and staff is a critical piece of community infrastructure.”

— Betsy Carlin | Former Board Member | Child Advocate

# Our Programs

PROGRAM DIRECTOR  
Nicole Philbin

The 2021-2022 school year brought big changes at Children's Learning Center. While the pandemic undeniably changed the way early education services are delivered, CLC also restructured the program after two of its longtime directors retired. This year was the first time all of the CLC's programming; Head Start and Early Head Start, Childcare, and Special Education services, were brought together under one program director. This major shift was an opportunity to unite Children's Learning Center in a new way and strengthen the program by tapping into the strengths of our diverse programs and staff.

Like many organizations, CLC was faced with staffing challenges. Personal changes in the lives of staff created higher than average turnover and hiring new team members was extremely challenging. Using the general financial support of the Department of Family Services through the Childcare Stabilization Grants, we were able to offer hiring bonuses for new staff, referral bonuses for staff who brought new people to the organization, a monthly gas stipend and a regular schedule of retention bonuses. Children's Learning Center is blessed to have such amazing employees and we are grateful to have the opportunity to recognize them in this way!



390

Meals a day  
breakfast, lunch  
and snacks

40

CLC low income families  
receive bags of food to take  
home every weekend thanks to  
our partnership with the Good  
Samaritan mission

672

Staff hours a day

## SPECIAL EDUCATION

Children's Learning Center provides early intervention and special education services to children birth through 5 in Teton and Sublette Counties. This fiscal year we moved back to in-person services for early intervention and special education.

We implemented a new system in partnership with CLC's preschool classrooms to double the number of children who can take part in a high-quality educational setting at no cost. This allows all children to learn in a setting alongside typically developing peers.

As a part of a statewide monitoring initiative, CLC Special Education has worked closely with the Department of Behavioral Health to improve practices and systems.



140

Children received special education  
and related services

FREE

441

Developmental  
Screenings

76

Developmental  
Evaluations

# TETON COUNTY EDUCATION/CHILDCARE

After a lot of turbulence and uncertainty related to COVID-19 the previous year, Teton County Education and Care was able to move back to full enrollment during the 2021-2022 school year. The pandemic shone a light on what a critical resource childcare is to the community. CLC was able to continue moving towards serving more families and we expanded the day from 8 hours to 9 hours for families who need it.

Staff education and professional development was a focus and 5 teachers have obtained a Child Development Associate credential or are currently working towards the credential. We have several others in either Associate or Bachelor level early education programs. Internally, we used our in-service days to advance knowledge in classroom management, curriculum development and the newly released Wyoming Early Learning Standards. This has allowed us to continue increasing quality and staying abreast of the latest trends and best practices in early childhood education.

We are also looking forward to reengaging with community partners such as the Jackson Hole Children's Museum, the Mobile Art Studio and partnering with individuals to provide enrichment opportunities like yoga.

190

Children enrolled

\$157,417

In tuition assistance

47%

of CLC families received  
tuition assistance

## HEAD START AND EARLY HEAD START

CLC's Early Head Start and Head Start programs serve our communities most at-risk children and families. By designing a system of comprehensive services, CLC goes beyond supporting children's education by partnering with community agencies to help families connect with the resources they need to meet their goals and thrive. Since the pandemic, we have seen an increased need for mental health services. We have partnered with several local organizations to provide much-needed mental health support to children, families and our staff. These supports have helped all of the CLC community weather the stress of the past year. We have also supported goals related to housing, financial literacy and learning English.

Due to the challenges in hiring staff, we found ourselves unable to continue our planned program model for our Head Start classrooms. However, when many programs were being forced to close entire classrooms and serve fewer children, we worked closely with the office of Head Start to create a program model that used one teaching team to serve all 40 families. While the children did not receive the same number of program hours, we did see child outcomes improve as a result of the consistent teaching staff and strong relationships.



91

Children enrolled

100%

of children were high risk  
and homeless

# Supporting Our 50th Year of Service and Ensuring the Next 50 Years

We have a proud 50-year history of providing quality early education and intervention services that are accessible and affordable to families and children regardless of their backgrounds, abilities or income. In addition to a strong early childhood program, we are committed to offering free developmental screenings, home-cooked meals, STEAM activities, field trips and more to nearly 1000 kids a year.

But each year, CLC experiences a 20% gap between the actual program costs and what we receive in government grants or tuition. We must fill this gap through year-round fundraising from a variety of sources including donations from individuals and private foundations, special events, business sponsorships and Old Bill's Fun Run.

Thanks to record level of generosity from friends and from government relief grants we were able to give our staff raises and a series of merit and tenure based bonuses in an attempt to keep pace with dramatically increasing cost of living and salary rates in our community.

## OLD BILL'S FUN RUN

**\$171,485**

Raised

**195**

Donors

## CHAMPIONS FOR CHILDREN

**\$219,000**

Split among our partners TLC,  
JHCM, and CLC

**\$73,000**

CLC's share

## Securing Our *Future*

This year in celebration of our 50th anniversary, we also made a commitment to secure the financial sustainability of our next 50 years. We launched a campaign to raise at least \$5M to be invested in a board-directed contingency fund whose interest would help support annual operating expenses into the future. To date we have raised \$4M of that goal! The contingency funds are invested in a long term interest bearing account managed by the JH Community Foundation. Lynn Friess, longtime friend, supporter of CLC, and grandmother of a CLC child, made an incredible leadership gift which has inspired \$900,000 in gifts from other donors to date.

**Make a donation today**

[childrenlearn.org/support](https://childrenlearn.org/support)

**\$2,507,4132**

Total Donations FY2022

**\$907,421**

Total Gifts for Program/  
General Operating

**\$1,600,000**

Total Gifts for the Long Term  
Contingency Fund

**290**

Donations Made

**22**

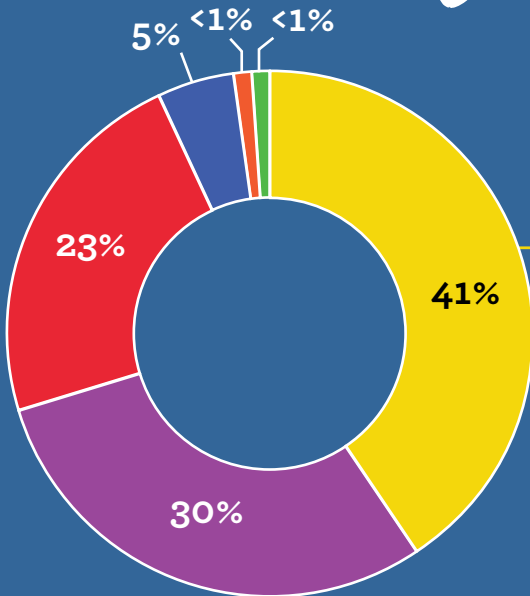
Gifts from Foundations

**11**

Donations from Businesses



# By the Numbers

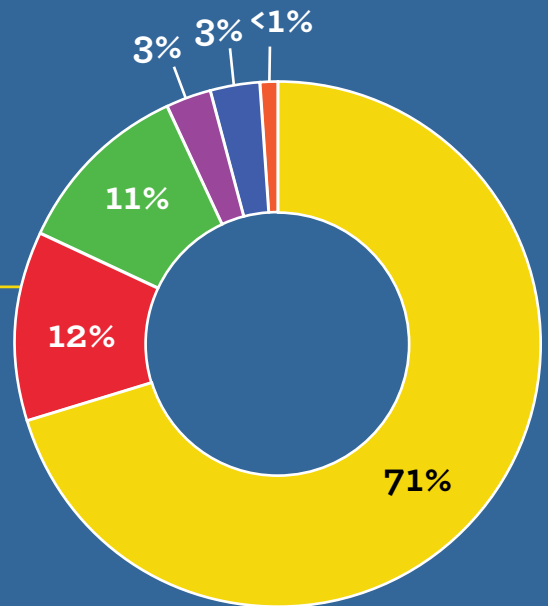


## INCOME \$8,124,790

- Government - \$3,397,109
- Program Services Tuition - \$1,871,872
- Fundraising - \$2,507,421\*
- In-Kind contributions - \$73,996
- Reserves - \$372,203
- Other - \$78,762

## EXPENSES \$6,481,214

- Total Payroll & Benefits - \$4,581,754
- All Other Expenses - \$782,917
- Tuition Discounts & Scholarships - \$173,585
- Occupancy, Repair & Maintenance - \$173,307
- In-Kind Use of Facilities - \$695,655
- In-Kind Services - \$73,996



\*Income includes over \$1,600,000 raised this FY for long term Contingency Fund.

# Our Staff



## ADMINISTRATION

PATTI BOYD  
*Executive Director*

LYTSI GARCIA  
*Administrative Assistant*

MIRIAM MORILLON  
*Finance Director*

ABBY O'NEILL  
*Operations/Benefits Manager*

NICOLE PHILBIN  
*Program Director*

## HEAD START

CRISTINA CAMPOS  
*Early Head Start  
Home Visitor*

CHERIE FLORES  
*Early Head Start  
Coordinator*

HITZIA GARNICA  
*Early Head Start  
Home Visitor*

SONIA HERNANDEZ  
*Early Head Start/Head Start  
Coach, Admin Staff*

ELSA LEMIN  
*Early Head Start  
Home Visitor*

MARIANA MCFARLANE  
*Head Start Coordinator*

LIZBETH PEREZ GARCIA  
*Teacher*

YADIRA SOSA  
*Teacher*

## SPECIAL EDUCATION Teton and Sublette Counties

JEN BAXTER  
*Occupational Therapist*

HEATHER BIXLER  
*Special Ed Data Manager  
& Office Assistant*

ANGELA BUTIKOFER  
*Inclusion Provider*

OLIVIA EIDEN  
*Big Piney Site Manager*

ROBBI FARROW  
*Occupational Therapist,  
Family Service Manager*

CYNDI FISCHER  
*Special Ed Services  
Coordinator*

BECKY GREGORY  
*Sublette Development  
Coordinator/Pinedale Site  
Manager*

ANNE BARRETT HAZARD  
*Speech and Language  
Pathologist*

STACI JONES  
*Inclusion Provider*

ANNE KAISER  
*Inclusion Provider*

JULIE KOLLENBORN  
*Special Ed Data Manager*

HOLLY MADOLE  
*EC Special Ed Teacher/  
Mental Health Coordinator*

MOLLY MAKELA  
*Speech and Language  
Pathologist*

LISA MASON  
*Sped Manager & Family  
Service Coordinator*

MARIAN MEYERS  
*Special Ed Contractor*

ELAINA OLIVER  
*Special Ed Contractor*

JEANNE RANEY  
*Speech and Language  
Pathologist*

EMILIE RENDALL  
*Inclusion Provider*

HANNAH SCAROLA  
*Inclusion Provider*

SONIA SCHUPP  
*Occupational Therapist*

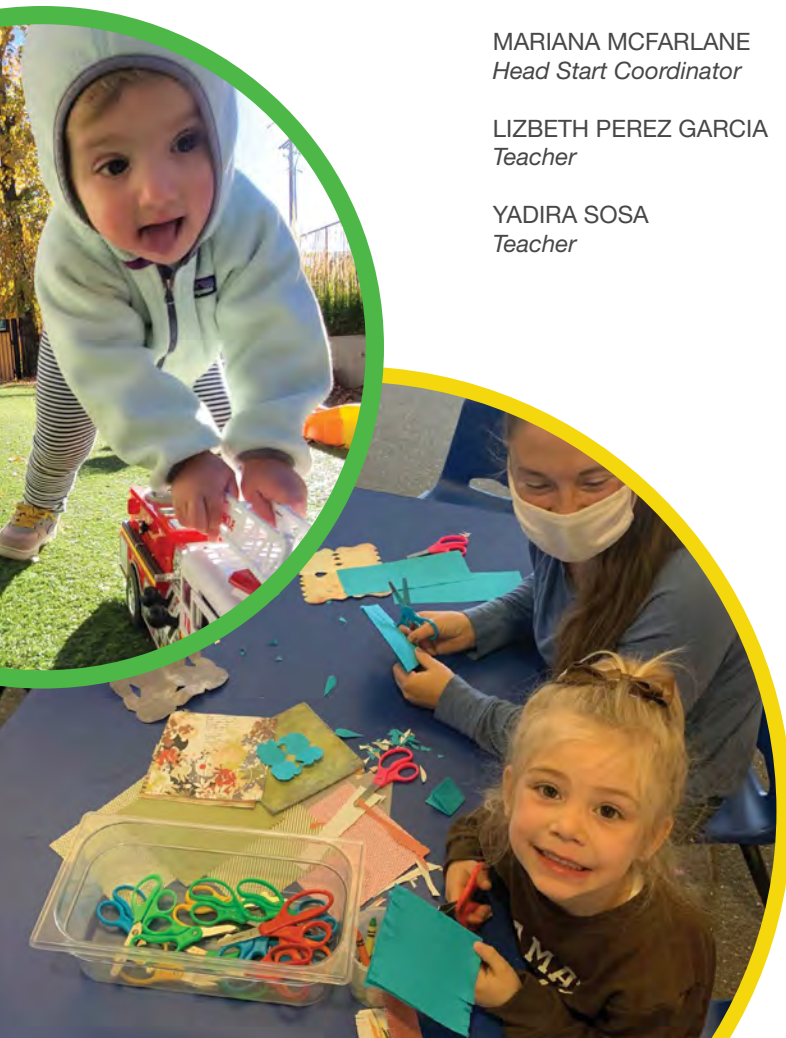
JAMIE MCLAIN  
*Preschool Teacher (Big Piney)*

MARISSA STONE  
*Preschool Teacher (Pinedale)*

KIM TAYLOR  
*Preschool Teacher (Big Piney)*

WENDY WILLIAMS  
*Special Education Teacher*

KAT WOLAVER  
*Preschool Teacher (Pinedale)*







# 36%

of our staff has been with CLC  
more than 5 years

# 23%

have been with us more  
than 10 years

## TETON COUNTY EDUCATION

GLORIA AGUILAR  
*Teacher*

MARIA AYALA  
*Teacher*

MELISSA BENANCIO  
*Substitute*

ANGIE BILLGER  
*Teacher*

BIBIANA BONILLA  
*Substitute*

ADRIANA FARFAN  
*Teacher*

COLUMBA CARRILLO  
*Teacher*

JESSICA CASTILLO  
*Support Teacher*

JENNIFER CASTILLO  
*Support Teacher*

JACKIE COCA  
*Teacher*

ADRIENNE COCA  
*Teacher*

CECILIA CONTADOR  
*Teacher*

JUSTIN FINCH  
*Teacher*

ALEJANDRA FRANCO  
*Teacher*

DIANA GARCIA DUARTE  
*Teacher*

IRMA GARCIA  
*Teacher*

ESPERANZA GARCIA  
*Support Teacher*

SANDRA LOPEZ  
*Teacher*

ANNIE JOHNSON  
*Rafter J Site Manager*

KATRINA LARSON  
*Teacher*

JENNIFER LOPEZ  
*Support Teacher*

ARIANNA MAHONEY  
*Teacher*

HEATHER MENKE  
*ECE Program Coordinator*

NORMA MONTIEL  
*Mercill Site Manager*

RAQUEL MORENO  
*Support Teacher*

SAMANTHA O'BRIEN  
*Teacher*

BERONICA OSEGUERA  
*Teacher*

DIEGO PALACIOS  
*Kitchen Assistant*

MIRIAM PEREZ  
*Support Teacher*

IRAIS SOSA  
*Food Program Manager*

ANGELA SPLAVNIC  
*Teacher*

MONTSE VALADEZ  
*Support Teacher*

ISIDRA VARGAS  
*Teacher*

BETTY MARENO  
*Support Teacher*

## BOARD

MARILEE GORDON  
*Co-chair*

MELANIE BENNETT  
*Co-chair*

TOTE TURNER  
*Vice-chair*

TAMI CROSSON  
*Secretary*

DAVID PARK  
*Treasurer*

KARINA CARILLO

STEPHANIE HARDEMAN

JESSICA JAUBERT

KATIE MANNEN

COURTNEY MARVIN

LANCE WINDEY

LISA LORD-PRICE  
*Emeritus*

JEFF GOLTZ  
*Emeritus*

MARK MICHELSON  
*Emeritus*

JANET WOODLAND  
*Emeritus*

AUDREY COHEN-DAVIS  
*Emeritus*

GREG MASON  
*Emeritus*

BETSY CARLIN  
*Emeritus*

ANN WILLOT  
*Emeritus*

# Our Schools

Children's Learning Center is proud to serve children at four locations in three communities in Teton and Sublette Counties.



**RAFTER J**  
Jackson



**MERCILL CENTER**  
Jackson



**BIG PINEY**  
Sublette County



**PINEDALE**  
Sublette County

Home to CLC's main commercial kitchen, large outdoor natural play space, and a greenhouse that helps supply ingredients in home-cooked meals.

- Built in 2011
- 12,000 Square Feet
- Owned and maintained by Teton County
- 65 Children
- 24 Staff including special ed department
- 5 Classrooms

Home to a commercial prep kitchen, CLC administrative offices, and a whole lot of fun and learning.

- Built in 2017
- 15,000 Square Feet
- Owned and maintained by Teton County
- 105 Children
- 30 Staff
- 7 Classrooms including 2 Head Start classes

Home to morning and afternoon preschool programs, a gross motor room, and large outdoor play space to encourage our play-based emergent curriculum.

- 4,800 Square Feet in the Big Piney recreation center
- Managed by the town of Big Piney
- 36 Children attending morning or afternoon preschool
- 11 Staff including special ed department
- 2 Classrooms

Home to morning and afternoon preschool programs, a gross motor room, large outdoor natural play space, and a greenhouse that helps supply ingredients in home-cooked meals.

- Built in 2000
- 6,000 Square Feet
- Owned and maintained by CLC
- 36 Children
- 11 Staff including special ed department
- 2 Classrooms

## Special thanks

to our corporate sponsors who support CLC



PO Box 4100  
Jackson, WY 83001  
childrenlearn.org  
(307)733-1616 • info@learningcenterwy.org  
tax id number: 83-0222566

*"Children's Learning Center is an equal opportunity provider."*